

6 Best Practices to Disrupt the Poverty to Prison Pipeline

Presented by Nathan Mayo, VP of Programs for True Charity

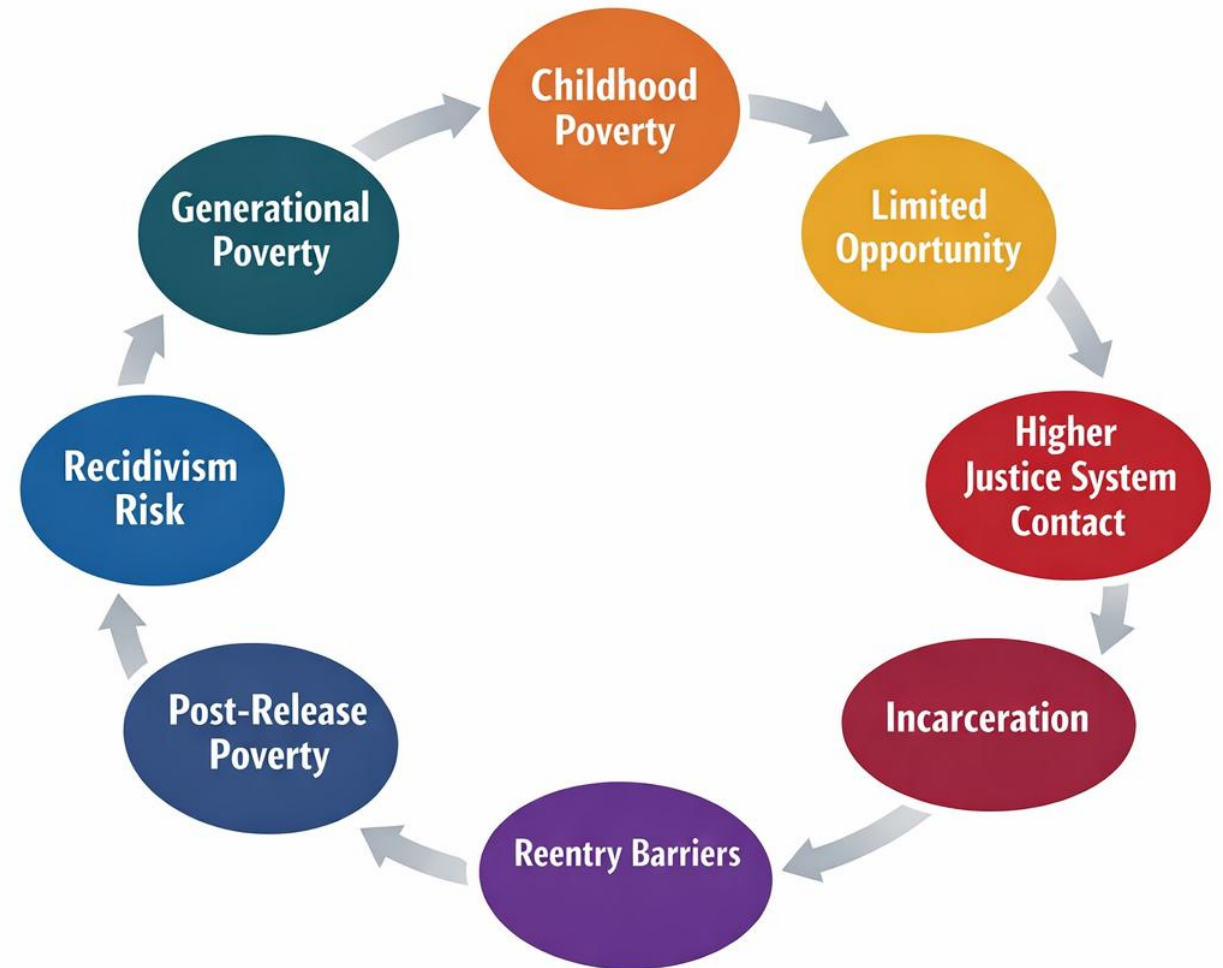
**GOD OUR
PROVIDER**

Phil 4:19 And my God will meet all your needs according to his riches in glory in Christ Jesus.

CMCA 2026 SUMMIT | MAY 14 - 16, 2026 | WHEATON COLLEGE

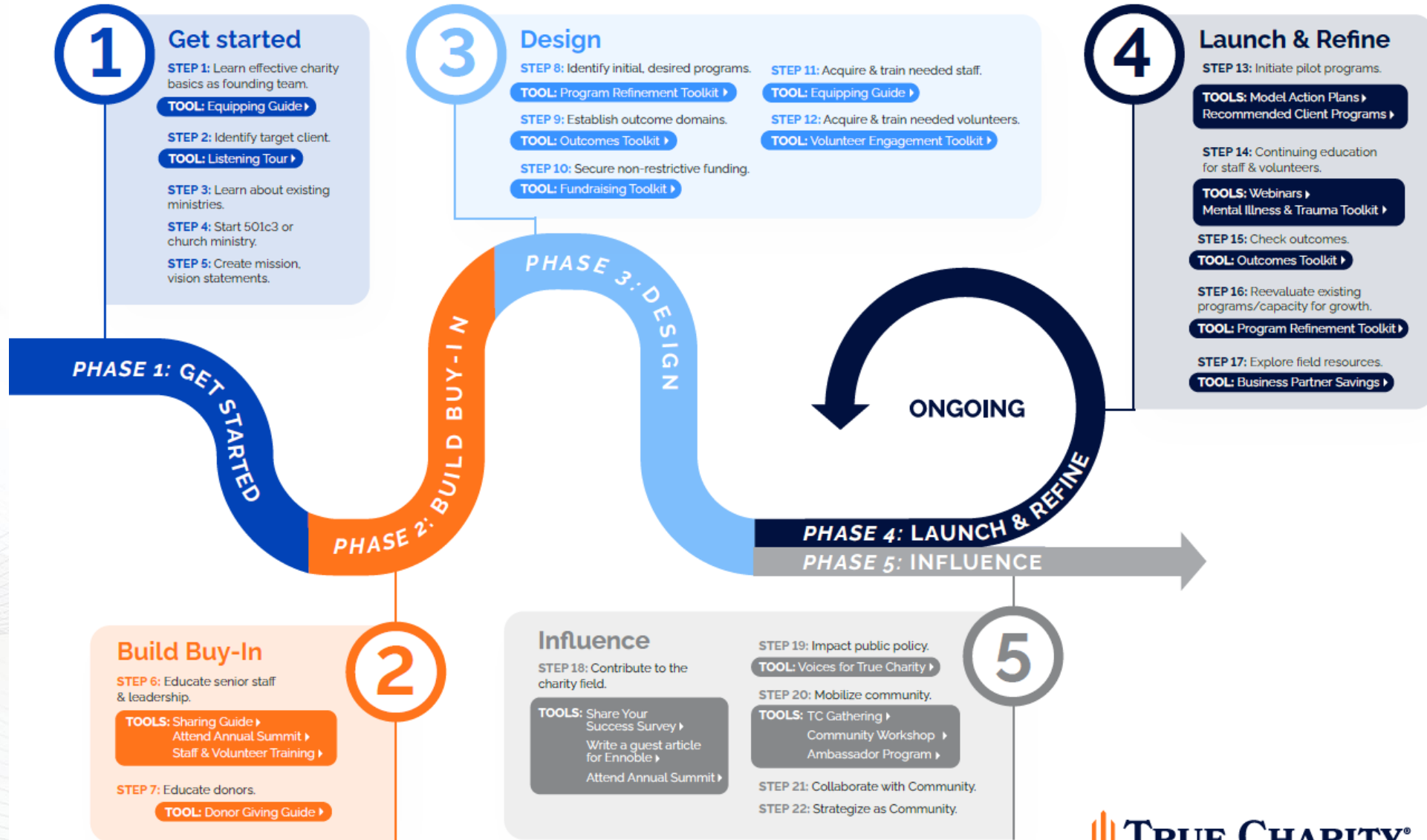
Poverty/ Incarceration Connection

- Kids from low-income households are 10-20x more likely to be incarcerated than those from upper income households.
- 2 in 3 of the incarcerated enter from poverty
- 2 in 3 who re-enter are poor after a year



Path to Effective Charity

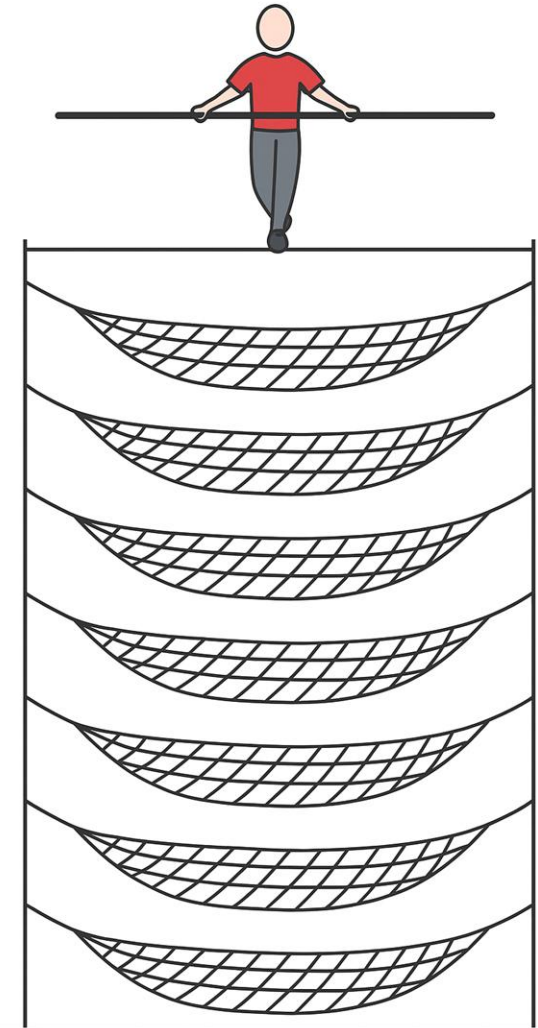
for nonprofits and churches



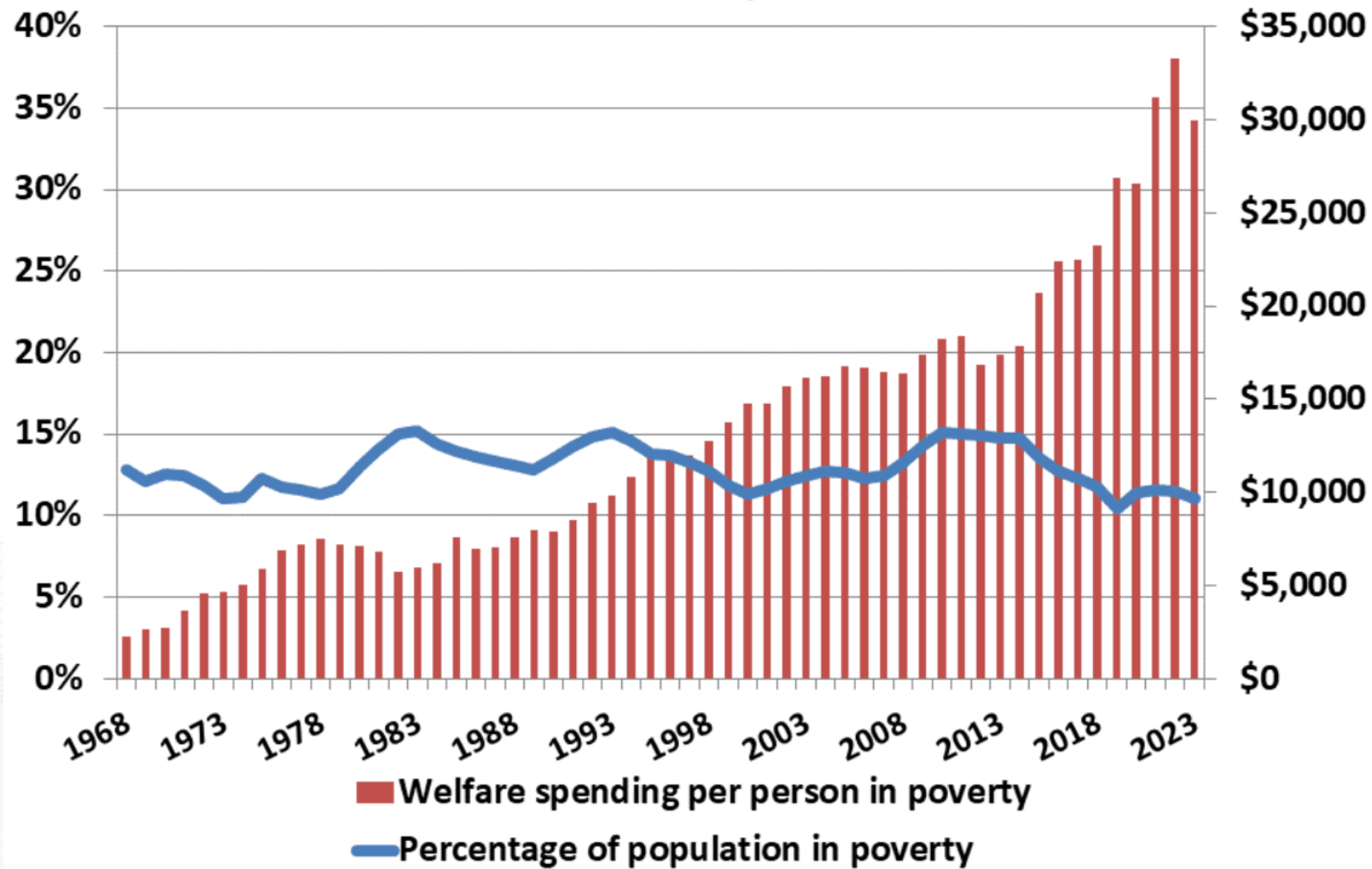
What does it take to become homeless?



Anyone can become homeless



Welfare programs have addressed the symptoms of poverty



The Problem

- 65% of working-age people in poverty did not work for a single week in 2023.
- 34% of children born in poverty will remain there throughout their lives.
- Disability claims have significantly outpaced population growth.
- Church attendance among the poor is at a record low.
- Social connectedness is much lower for people with lower incomes.
- Poor children are less likely to benefit from the “two-parent privilege.”
- “Deaths of despair” from suicide and substance abuse are at record highs.

The Problem

In American poverty, the problem of **alienation** is greater than the problem of **deprivation**.



The Solution

1. A holistic perspective
2. The right agent
3. A developmental goal
4. A relational approach
5. Evidence-based practice
6. Systemic thinking



Holistic Perspective

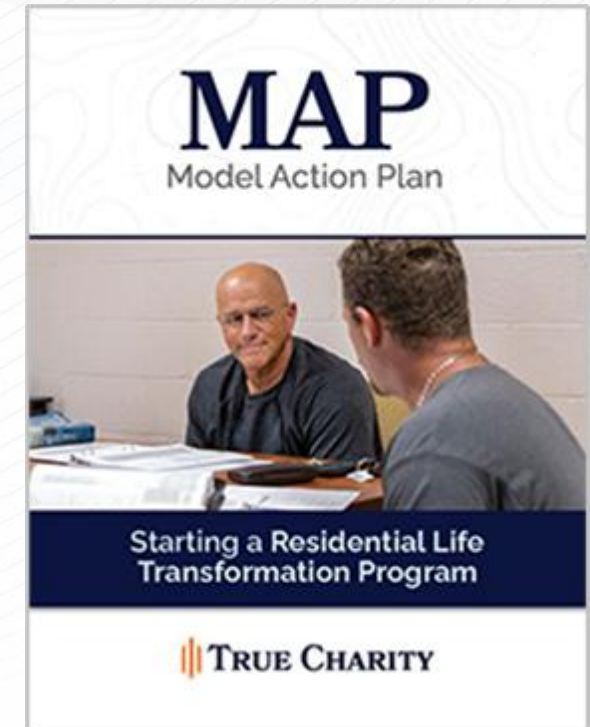
People are created in the image of God with physical, intellectual, emotional, and spiritual components.



Harvard Human Flourishing Domains

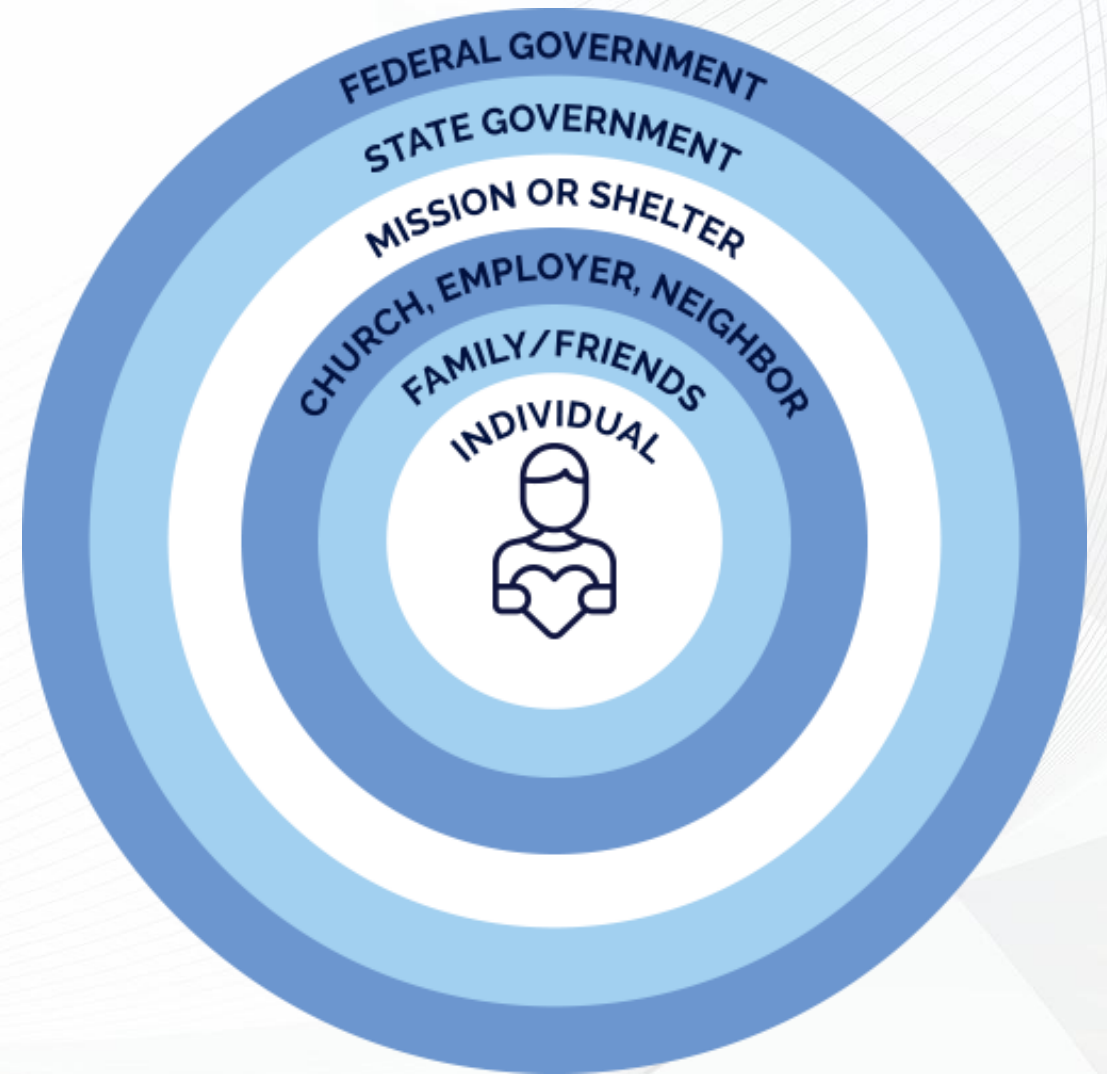
Holistic Perspective: Implementation Tips

1. Do a multi-domain inventory of people's needs
2. Identify root causes
3. Have a program or referral for root causes
4. Track people over time



The Right Agent

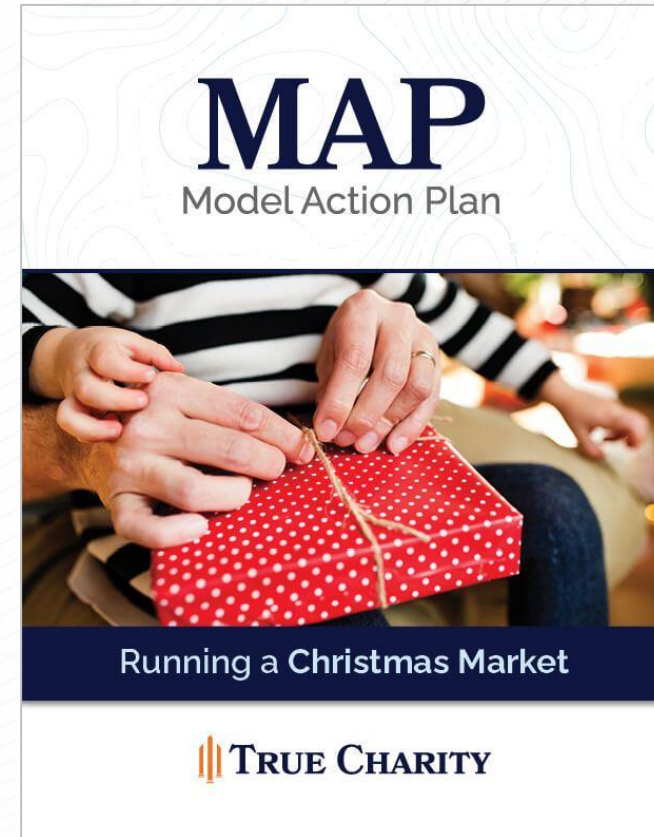
People closer to the problem do their part before people and institutions farther away step in.



Subsidiarity: solving problems at the most local level possible

The Right Agent: Implementation Tips

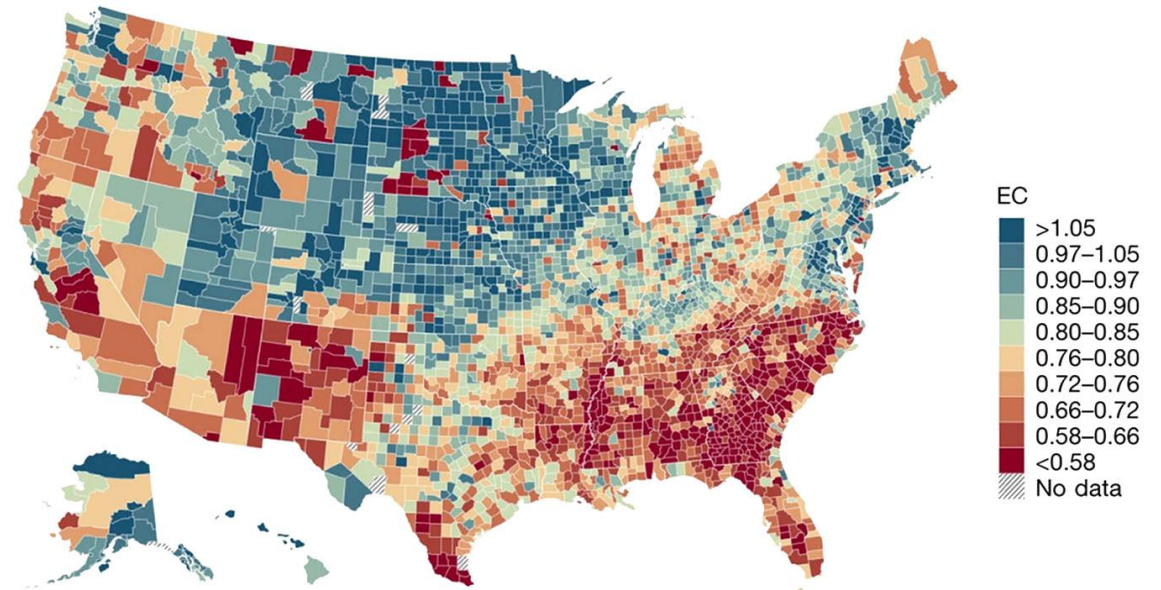
1. Ask people to do their part
2. Ask who they know who can help
3. Talk to those people



A Relational Approach

Build genuine, reciprocal relationships with people in poverty, and connect them to new ones.

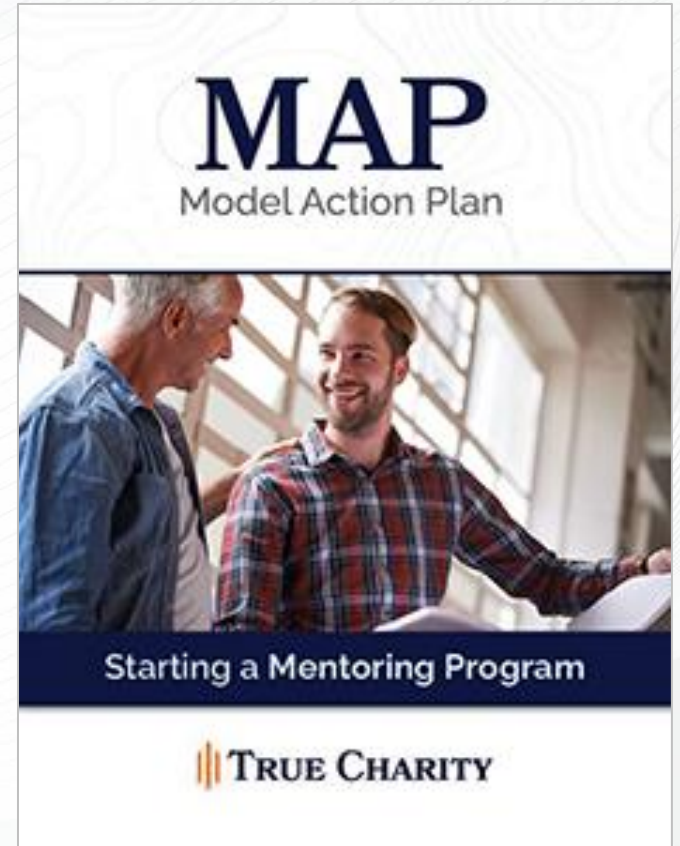
THE ECONOMICS OF SOCIAL CAPITAL



Economic Connectedness by County – Raj Chetty et al.

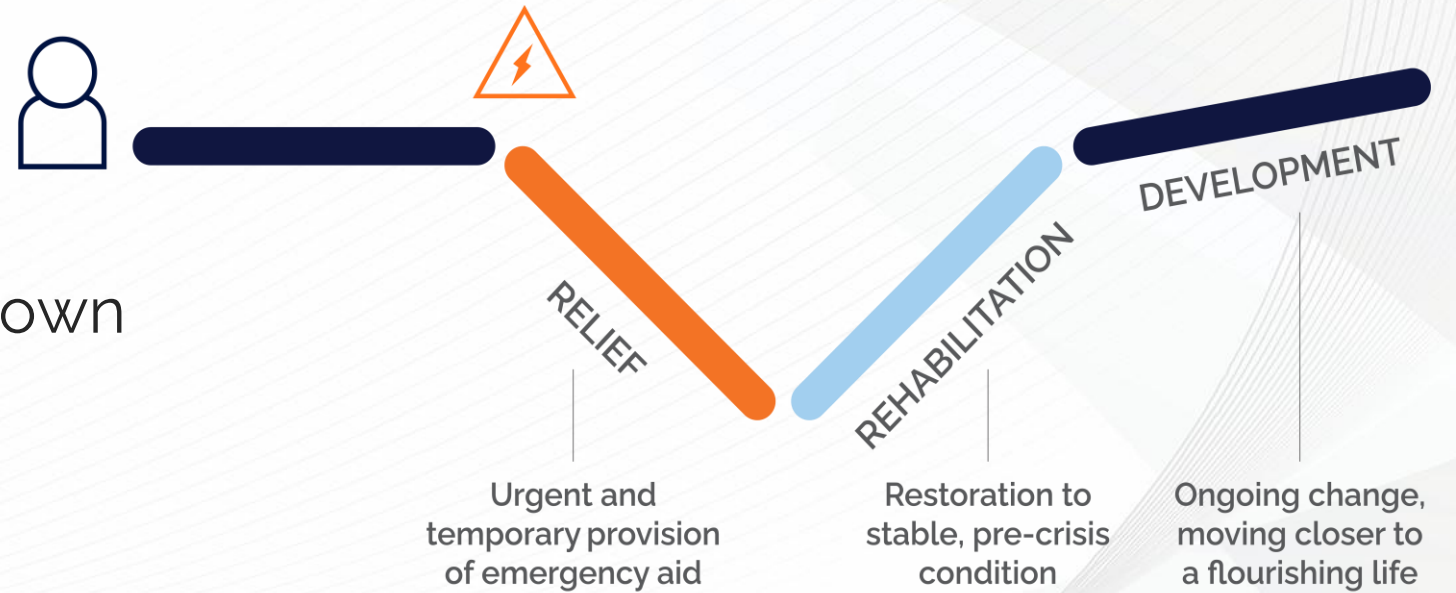
A Relational Approach: Implementation Tips

1. Build relationship through vulnerability
2. Support skills that build relationships across class lines
3. Bridge connections



A Developmental Goal

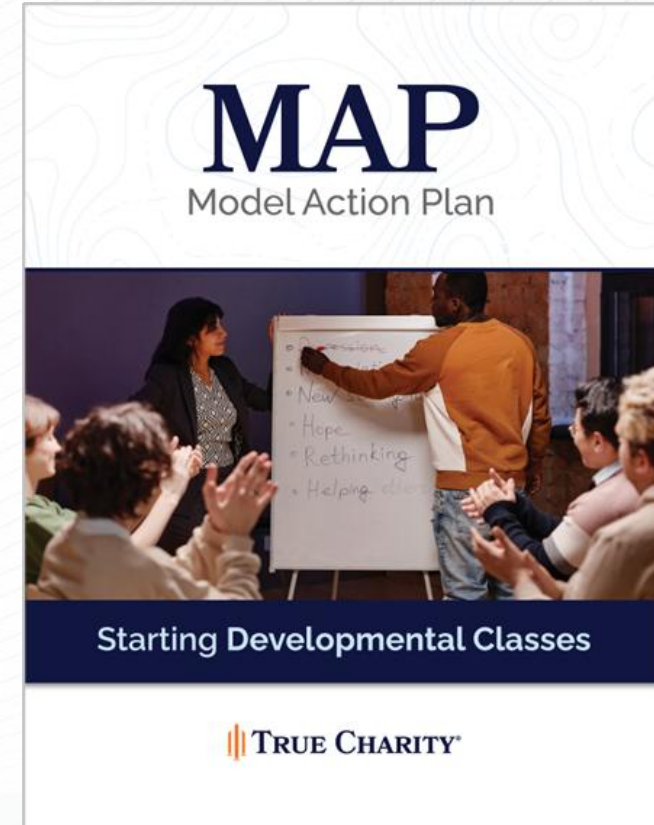
Empower people to lead their own solutions by leveraging their capacity



From *When Helping Hurts*, Corbett & Fikkert, pgs. 99-101

A Developmental Goal: Implementation Tips

1. Determine what capacity they have
2. Help them see where they want to go
3. Demonstrate belief in them



Evidence-Based Practice

Start with best practices and measure outcomes to see if they work for you.



MAP
Model Action Plan

Starting a Food Co-Op

TRUE CHARITY

Collective Meeting Model
OVERVIEW

1. Individuals fill out an application and pay an initial fee to join the food co-op
2. Each meeting, members pay their dues, unpack truck, sort food, fill bags, and share in some meeting or class together.

CONSIDERATIONS

1. How many times will you meet per month?
 - a. Who will pick up the food?
 - Volunteers could pick up while members wait.
 - Assigned members could pick up food.
2. How will you divide food for each box?
 - The answer to this question will change based on the food donations and membership. You'll need to adjust through the year, and you can discuss these issues at pre-meetings (with your entire membership or an advisory board).
3. How will you distribute boxes?
 - Standardized boxes, distributed by family size (i.e., families receive 2 boxes, families of 5-8 receive 3, etc.)
 - Different portions for each family size
 - Some co-ops allow members to earn as many vouchers as they like
4. How much will your membership fee be (and each meeting)?
 - 5%-20% of the value of the food is a typical membership fee
 - If you are distributing food from a source that prohibits work or payment for food, you can keep membership fee from any donations going towards buying food. Members can then cover things like funding a coordinator, coffee, or activities members decide on throughout the year.

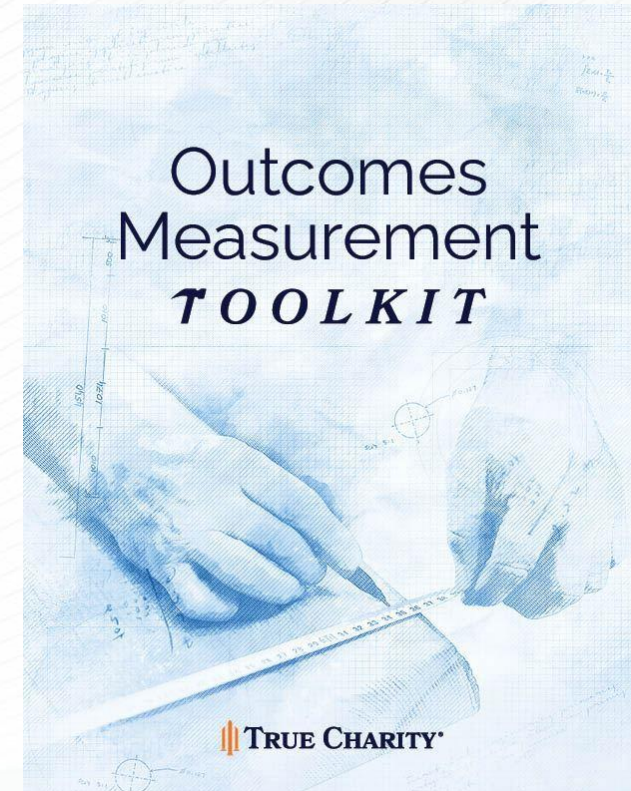
1. Collective Meeting Model

A step-by-step guide • Editable template documents • Instructional videos

Model Action Plans: Detailed descriptions of innovative charitable models.

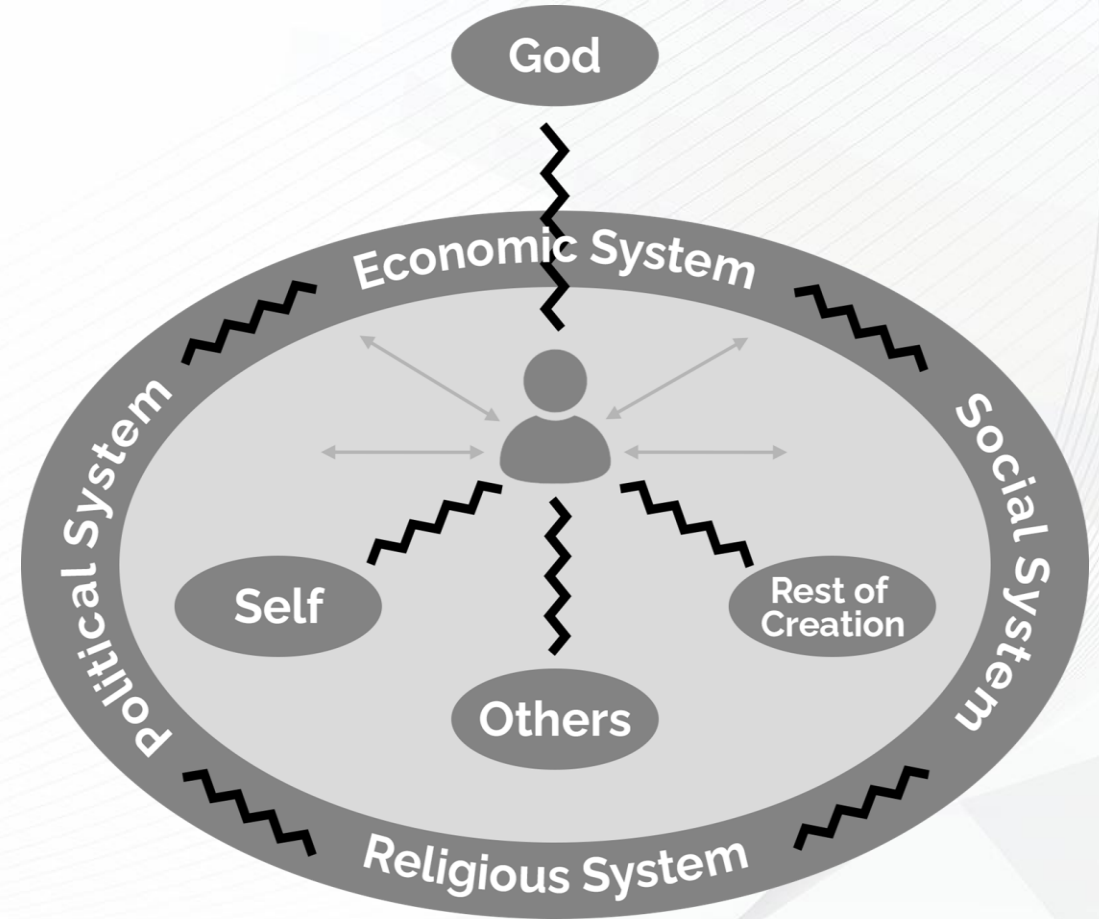
Evidence-Based Practice: Implementation Tips

1. Identify what you want to see in the long run
2. Ensure your programs support it
3. Determine how to measure success
4. Collect and analyze the data



Systemic Thinking

Acknowledge that not all dysfunction is at the individual level, and address systems when they are the obstacle to success.



A System: a set of interconnected components that form a unified whole

Systemic Thinking: Implementation Tips

1. Look for trends that affect multiple clients
2. View your community as a system for solving poverty
3. Look for leverage points
4. Pilot solutions with humility



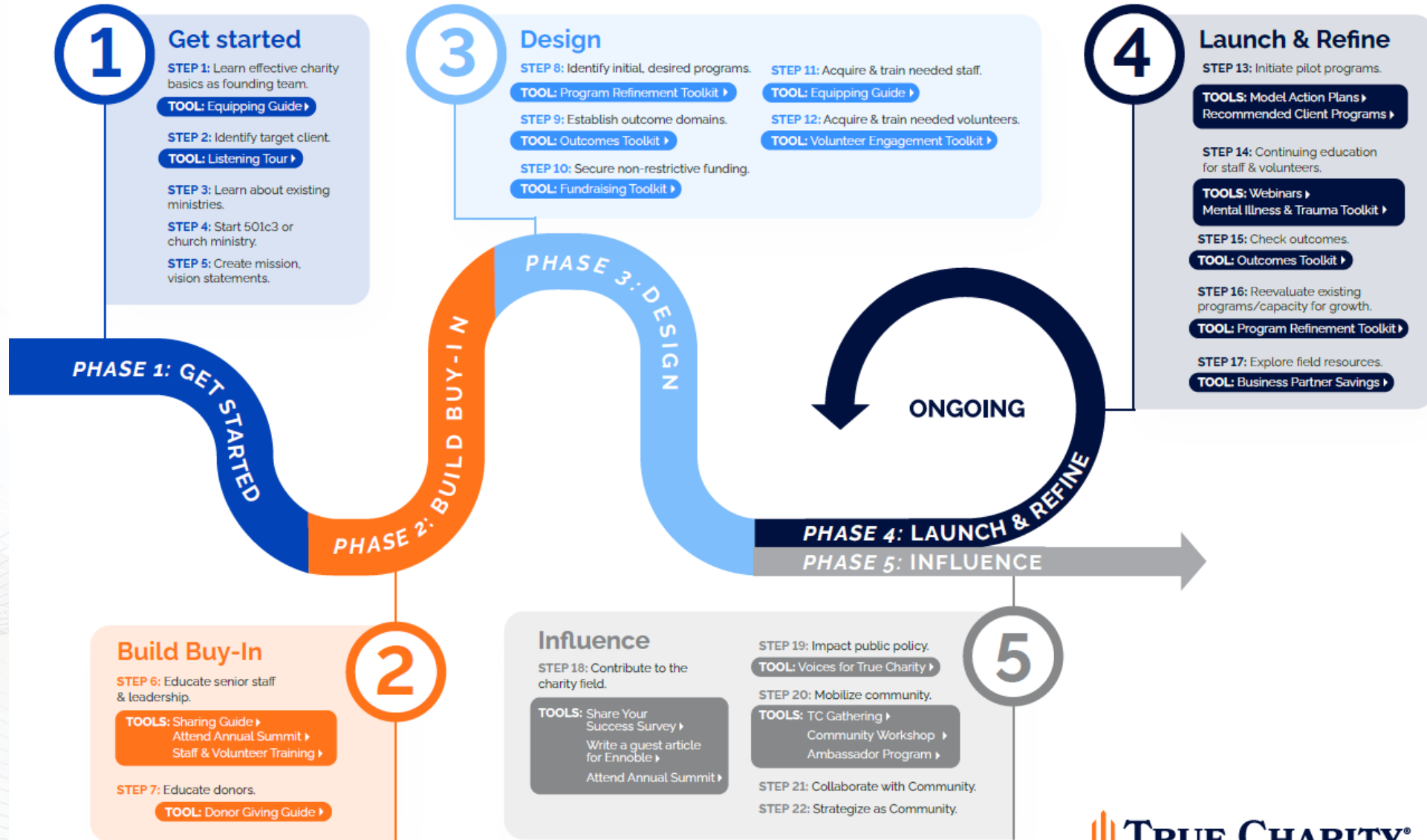
The Solution

1. A holistic perspective
2. The right agent
3. A developmental goal
4. A relational approach
5. Evidence-based practice
6. Systemic thinking



Path to Effective Charity

for nonprofits and churches



Take the next step!



Join the Network

truecharity.us/join



**Attend a member
orientation**



Take the quiz

truecharity.us/path