



Empowering Disciplemakers Affected by Incarceration

Don Allsman, CEO, Completion Global, don.allsman@completion.global

**GOD OUR
PROVIDER**

Phil 4:19 And my God will meet all your needs according to his riches in glory in Christ Jesus.

CMCA 2026 SUMMIT | MAY 14 - 16, 2026 | WHEATON COLLEGE

Completion Global

Innovation for the Great Commission



Don Allsman, CEO

www.completion.global info@completion.global

Empowering Disciplemakers Affected by Incarceration

Objectives

- Strength of the indigenous prison Church inside
- Emerging collaborations to empower disciplemakers
- Practical ideas in prison and re-integration

Introduce Panel

Prayer

Strengthening the Indigenous Church in Prison



God's people sowing seeds
among incarcerated



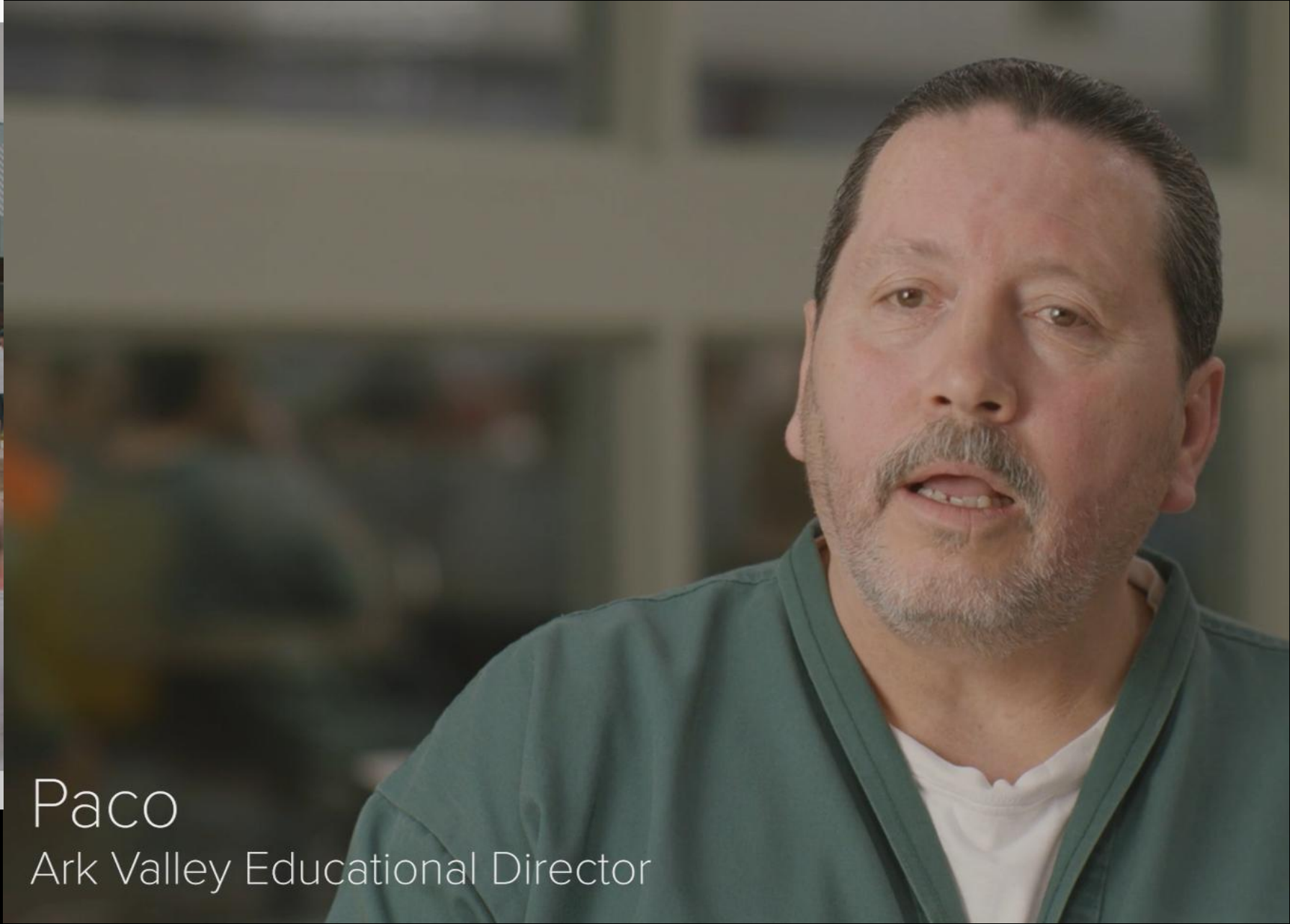
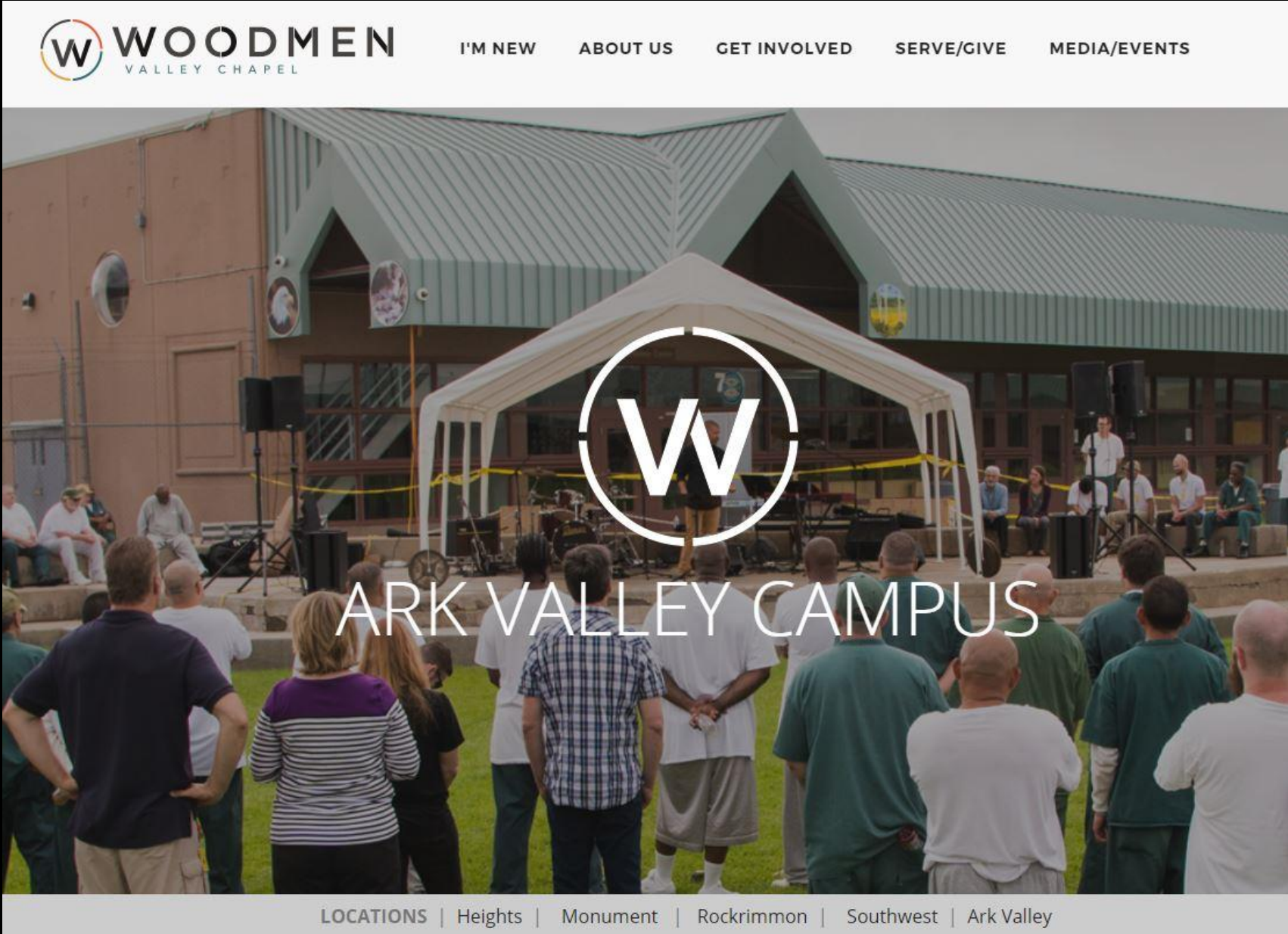
Fruit is cropping up
all over



Thousands discipling
fellow prisoners



Not every person reached, but no longer dependent outside



Old Model: Unreached Mission Field



New Model: Indigenous Church

“The church goes on when chaplain/volunteers go home”

Mark Walker CMCA 2023

Prison Ministry as Cross-Cultural Mission

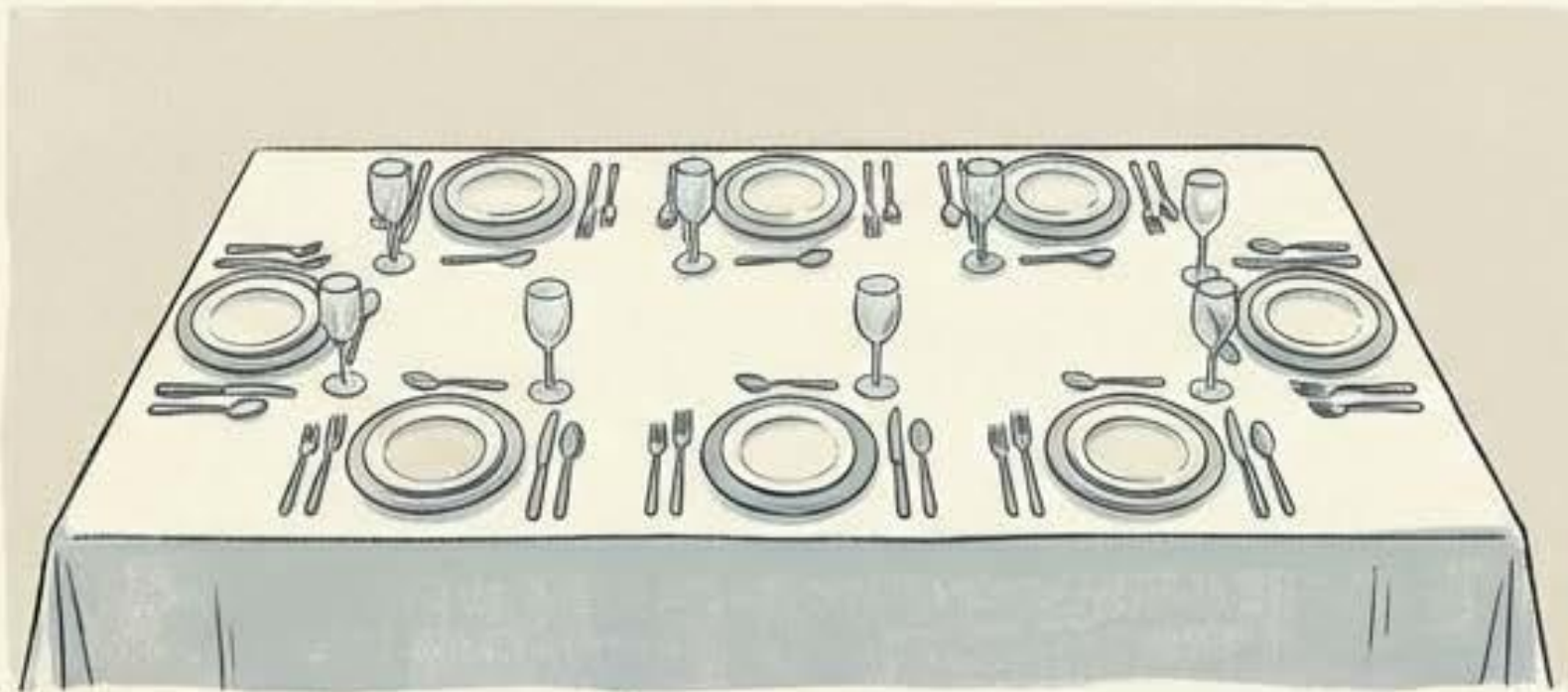


1. Prison has its own distinct culture “unspoken rules of expected behavior” (Thailand, Nigeria, U.S. prisons)
2. Those who live in/shaped by culture “indigenous to that culture” (indigenous vs. relocating to Peru)
3. We now have mature, indigenous disciple-makers in prison culture (leading the Church on the inside)

Prison culture + indigenous disciplemakers = Indigenous Church in Prison

Don't Just Set the Table. Open the Kitchen.

The Old Model: The Table



We cook the meal (strategy), set the table (funding), and invite partners to sit down and eat.

The New Model: **The Kitchen**



We invite partners into the kitchen to decide *what* to cook and *how* to cook it together.

“It might not be best for the cross-cultural agency to make these decisions and then invite indigenous leaders to the prepared table.” — Tanya Hauser

Co-Creation vs. Invitation

True partnership begins at the ideation phase, not the implementation phase.

Model A: The Table (Old)



Westerners prepare the meal → Invite partners to the table → Decisions are pre-made.

Outsiders

Indigenous

Model B: The Kitchen (New)



Westerners and Partners enter kitchen → Ingredients selected jointly → Strategy co-created.

Outsider & Indigenous

The Strategic Case for Indigeneity

Respondents consistently cited three decisive advantages over traditional missionary models:



Access

Indigenous workers reach restricted areas where Westerners cannot legally or safely go. They operate below the radar in closed nations.



Context

Zero cultural distance. Fluency in local languages and “honor/shame” dynamics reduces friction and increases speed of trust.



Sustainability

The work survives political upheaval or Western departure because ownership is local from day one. It is not an import; it is a native plant.

Questions That Will Define the Next Decade

1. The Kitchen Test

Are we inviting partners to cook with us,
or just to eat what we've prepared?

2. The Capacity Check

Does our funding build their business/independence,
or does it enforce their reliance on our payroll?

3. The Success Metric

Are we measuring success by Western efficiency,
or by the depth of Indigenous ownership?

Indigeneity: Cutting Edge World Missions

- Indigenous need to see themselves as legit
- Outsiders need to co-create with insiders

Taking it a Step Farther:
Helping Indigenous Church
Recognize Their Part in World Missions

1. God bringing upgs to our prisons
2. Disciplemakers via deportation
3. Returning citizens engaging diaspora

Questions and Comments

Emerging Collaborations to Empower Disciplemakers



THE EMPOWERMENT NETWORK
(www.theempowerment.network)

Empowering disciplemakers
affected by incarceration,
both in prison & after re-entry

*Empowering disciplemakers
affected by incarceration*



EMPOWERMENT
NETWORK

*One Network
Three Communities*



*Strengthening the
Indigenous Church Inside
America's Prisons*



FACILITATORS
COHORT





EMPOWERMENT
NETWORK



FACILITATORS
COHORT

- Empower disciplemakers in prison (TUMI facilitators, in-prison coaches, PSF profs)
- Strengthen indigenous church inside
- Share best practices with cohort members
- Develop new tools and events together

Grow a nationwide collaborative community hosting periodic meetings, a platform of accessible resources, and 50-state participation by 2029.

CHURCH ALLIANCE



Assisting Disciplemakers Transition To Free-world Churches



EMPOWERMENT
NETWORK



CHURCH
ALLIANCE



- Church directory (video training)
- Assist transition to culture
- Find place of service in local church
- Share ideas with Alliance churches
- Resource section (videos, coalitions)

By 2030, grow a directory of churches from all 50 states who are trained to welcome disciplemakers affected by incarceration, sharing ideas with other Alliance members.

*Strengthening Alumni to
Serve In Free-World Church*



ALUMNI
ASSOCIATION





EMPOWERMENT
NETWORK



- Graduates of formal, in-prison disciplinemaking programs of at least 3 years
- TUMI Capstone, Prison Seminaries Foundation, others
- Interaction with each other on the outside
- To strengthen Church outside

Invite all Capstone and PSF graduates by 2030



THE EMPOWERMENT NETWORK
One Network, Three Communities
(www.theempowerment.network)

- Paul urged Philemon to receive Onesimus as useful
- It took all three to empower Onesimus for optimal impact
- Strengthen indigenous church inside; facilitate alumni outside; assist in church integration



EMPOWERMENT
NETWORK



EMPOWERMENT NETWORK

ONE NETWORK, THREE COMMUNITIES *"EMPOWERING DISCIPLEMAKERS AFFECTED BY INCARCERATION"*

THE EMPOWERMENT NETWORK IS COMPRISED OF THREE COMMUNITIES WHO RECOGNIZE THE VALUE OF EMPOWERING DISCIPLEMAKERS IN PRISON AND AFTER RE-ENTRY.

[LEARN MORE](#)

Visit www.theempowerment.network



Questions and Comments

Practical Ideas in Prison and Re-integration

Panel Questions

1. *How are the incarcerated carrying out the responsibilities of the Church on the inside?*
2. *How can outsiders co-create with the indigenous church inside?*
3. *How can outsiders help with re-integration?*